



Castamet Works Pvt. Ltd.

(A Landmark in Quality Castings)

Pioneer in Casting solutions for Cement, Power & Mining sectors

About us

Castamet Works Pvt. Ltd. was setup in year 2008. We have state of the art manufacturing unit at Ajmer in Rajasthan (India), with a production capacity of 5000 MT castings per annum.

We have Expertise in Wear, Impact, & Heat resistant casting products

Vision

To manufacture products comparable to international standards deploying state of the art technology and continuous innovation.



Mission

To provide world class products of outstanding quality thereby creating value for all stakeholders .



Values

- ◆ Customer Delight
- ◆ Pursuit of Excellence
- ◆ Fair Practices
- ◆ Collaboration & teamwork
- ◆ Concern for Environment
- ◆ Social Responsibility



Quality Assurance

All the Casting are designed for compliance to all National & International Standards. Stringent Quality Control and Inspection at all stages of manufacturing ensures that products are fully suitable to give reliable performance throughout service life.

The Quality Management System of the Company has been accredited by Bureau Veritas in accordance with AS/NZS ISO 9001. The Certificate covers manufacturing of all types of castings produced by the company.

Research & Development

We believe in achieving sustainability & enhancing product performance through

- ◆ Collaboration with Top Research Institutes, Labs, & Domain Experts
- ◆ Continuous Innovations
- ◆ Process Improvement
- ◆ Customers' feedback
- ◆ Resource Conservation



Casting Solutions for Industrial Applications

Cement Industry

Limestone, Clinker & Coal crusher and Cement Grinding Mills

- ◆ Grinding media
- ◆ Feed head or Head Wall Liners
- ◆ Shell Liners for Cement chambers in Bolted & Boltless configuration
- ◆ Blow bars for Limestone crusher
- ◆ Clinker crusher hammers
- ◆ Cooler plates and Side parts for clinker coolers
- ◆ Dip tubes for Preheater Cyclones



Thermal Power Plants

Coal Crushing and Lime Raymond Mills

- ◆ Tube Mill Shell Liners
- ◆ Plain & Toothed Ring Hammers for Coal
- ◆ Crushers in Mn Steel
- ◆ Hi-Chrome Grinding Media
- ◆ Pump Impellers

Mining And Mineral Processing Industry

Mineral Crushing and Grinding

- ◆ Diaphragm for HAG Mill
- ◆ Back plates for Ball mills
- ◆ Shell Liners for HAG & Ball mills in bolted & Boltless configuration
- ◆ Grinding media
- ◆ Jaw plates for Ore crushing
- ◆ Bowl & Mantle of Gyratory Cone crusher for Ore crushing



Product Details

With a decade of R&D experience, we have developed several products which **guarantees 50 - 200% more service life** when compared to products available in market.

Product Range

Variety of Products like Grinding Media, Blowbars, Cooler Plates, Tooth Points, Crusher Hammers, Clinker Crusher Hammers, Grizzly Bars, Liners & Other Crusher Parts, Roller Liners, Kiln Inlet and Outlet Segments.

Product Specification

Castings can be developed in various specifications/grades like:

- ◆ Manganese Steel (Mn3, Mn4 & Mn7)
- ◆ HRCS (Grade 4, 6, 7 & 9)
- ◆ High Chrome and Low Chrome
- ◆ Ni-Hard
- ◆ Martensitic Steel
- ◆ Any other composition required by customer

Product Highlights



Grinding Media

Specification : High Cr (12% - 16%)
Size : 13-70 mm
Application : Ball Mills



Clinker/crusher Hammer

Specification : Mn4
Net Weight : 50 to 90 kgs
Application : Clinker Cooler / Crusher



Side Sealing Grate Plate

Specification : HRCS9
Net Weight : 7 to 22 kgs
Application : Clinker Cooler



Blowbar

Specification : Mn3
Net Weight : 960 Kgs
Application : Crusher Internals



Various Size Pedals

Specification : NH4
Net Weight : 26 TO 32 kg
Application : Gypsum Plant



Cement Mill Liners

Specification : HC14
Application : Cement Mill



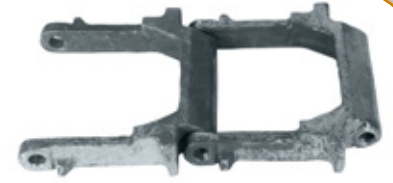
Roller Segments

Specification : HC20
Net Weight : 433 to 950 kgs
Application : Raw Mills



Feed Head Liners

Specification : CH14
Net Weight : 95 TO 120 Kgs
Application : Cement Kilns



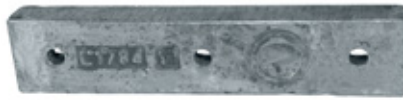
Chain Links

Specification : Mn4
Net Weight : 5 kgs
Application : Chain Conveyors



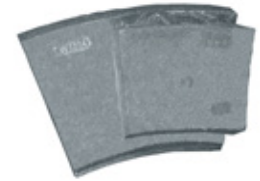
Cooler Grate Plates

Specification : HRCS
Net Weight : 16 to 46 Kgs
Application : Clinker Cooler



Impact Blade

Specification : CH14
Net Weight : 19 Kgs
Application : Crusher Internals



Track Segment

Specification : HC20
Net Weight : 95 TO 275 Kgs
Application : Raw Mills

We also customize products to meet your requirements.

Our Customers



Shree Cement Ltd, India



Nuvoco Vistas Corp. Ltd, India



Union Cement Company, UAE

Repeatability & Reliability of high performance always guaranteed.

Facility Details

Castamet builds on a philosophy that leading-edge manufacturing operations must be both highly efficient and extremely flexible to deliver optimal results. We have a semi automated plant & to enhance the accuracy of process and to maintain quality standards, we developed process flow automation in following sections through PLC & Microprocessor.

Melting Section



Induction Furnace

Type : Induction Type
Capacity : 2 Crucibles, 2 MT Each
Features : Dual Track, 1500 KW

Fettling Section



Shot Blasting Machine

Type : Y-Hanger Type
Features : Hanger Speed 6 rpm & Load Carrying Capacity of 300kg



Swing Grinder

Type : Single Wheel (V-Belt)
Size : Wheel Size (400 x 65 x 152.4 mm)

Heat Treatment Section



Batch Type Ht Furnace

Type : LPG Fired, Blower Operated
Size : 3.5 x 2.0 x 3.0 m (LxWxH)
Features : Max Temperature 1200 °C,
Water/Air Quenching



Continuous Ht Furnace

Type : LPG Fired, Blower Operated
Capacity : 1.5 Ton Per Hour
Features : Max Temperature 1200 °C,
oil Quenching



Tempering Furnace

Type : Electrically Operated
Capacity : 2 NOS (2 MT), 3000 kg/Tray
Features : Max Temperature 600 °C

Mould Making Section



Hand Moulding

Type : Manually Operated
Features : Equipped with continuous &
Batch Type Mixers Sand Muller,
Mech Reclamation Unit along
with Sand Conveying System



Machine Moulding

Type : Automatically Operated
Capacity : 45 Moulds Per Hour
Features : Equipped with Green Sand
Plant, Rotary Sand Coolers, etc.



Shell Moulding

Type : Vertical & Horizontal
Capacity : Max Pattern Size
(V - 450 x 680 mm²)
(H - 300 x 375 mm²)

Machining Section



Milling Machine

Type : Knee Type Vertical Milling
Machine
Features : Clamping area 1350 x 310 mm
& Max Safe Weight 350 kgs



Lathe Machines

Quantity : 2 NOS
Features : Lathe Machines for jobs
likhe Bore Cutting, Standard
& Metric Thread Cutting, etc.



Shaper Machines

Quantity : 2 NOS
Features : Maximum Stroke 32 inches &
Length of Ram as 42 inches

Quality Control

Castamet has implemented quality systems to ensure that products meet or exceed customers' expectations on quality & reliability. Our in-house labs are equipped with advanced analytical tools, necessary equipment and resources for Engineering and R&D team to monitor quality and enhance product performance.

Spectrometer



Ensures proper composition by checking value of individual element in the product.

Rockwell Hardness Tester



Ensures hardness of the product as per standards.

Digital Universal Strength Testing Machine



Ensures Tensile and Compressive strength of Moulding Sand.

Digital Permeability Tester



Ensures Permeability of Moulding Sands within specified limits.

Digital Moisture Meter



Ensures Moisture of Moulding Sands within specified limits for proper mould making.

Core Gas Determinator



Checks the rate and amount of gas evolution of any sand mixture.

Clay Washer



Checks Active Clay content of sand to ensure proper clay utilization.

Optical Microscope



Ensures defect free products by visual inspection at higher magnification.

Dry Abrasion Tester



Checks Abrasion Resistance of metallic material by dry sand testing.

Impact Testing Machine

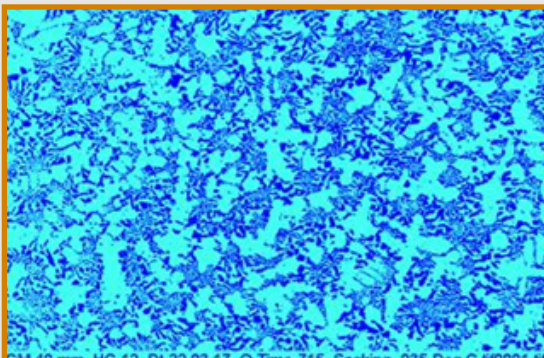


Ensures Impact Strength of the product as per standards.

Microstructural Analysis

Phase Analysis

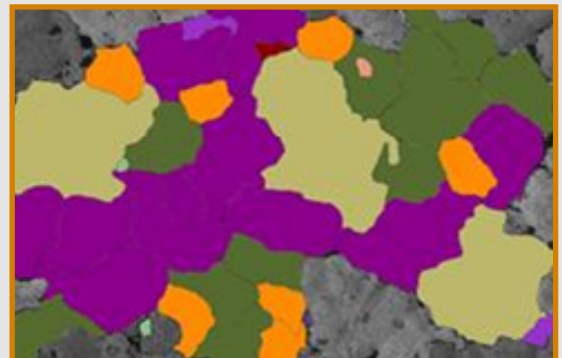
Phase quantification of High Chrome Castings (Grinding Media Balls).



SOLARIZED IMAGE (100X)

Grain Size Analysis

Grain Number evaluation of Austenitic Manganese.



SOLARIZED IMAGE (100X)



Castamet Works Pvt. Ltd.

(A Landmark in Quality Castings)

Works And Registered Office

- 📍 Village: Kharwa, Tehsil: Masuda
Dist: Ajmer - 305202
Rajasthan
- 📞 Phone: +91 9672976491
- ✉ Email: marketing@castamet.com
- 🌐 Website: www.castamet.com

Corporate Office

- ✳ 16, N.S. Road, 1st Floor
Kolkata - 700001
West Bengal